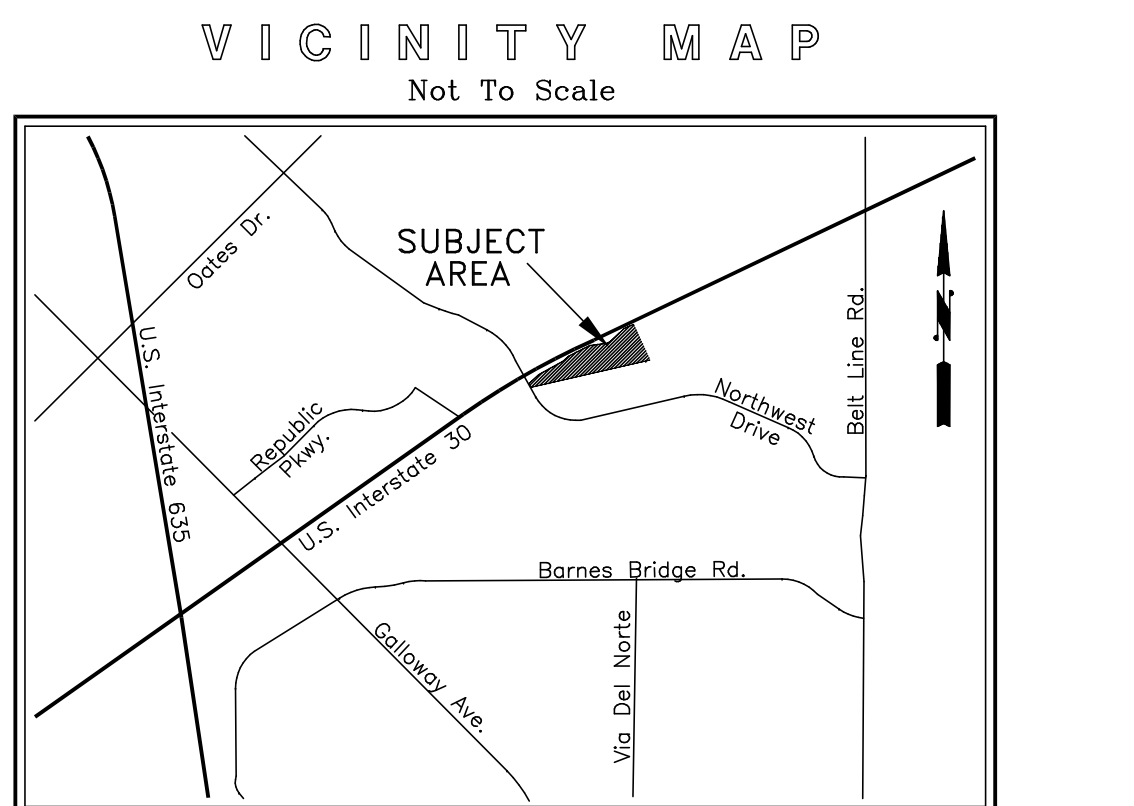


LEGEND

- PROPERTY CORNER
- BOUNDARY LINE
- - - ADJOINER PROPERTY LINE
- - - EASEMENT LINE
- - - SURVEY ABSTRACT LINE
- - - CITY LIMIT LINE (Approximate Location)

Vol. = Volume
Pg. = Page
Doc. No. = Document Number
D.R.D.C.T. = Deed Records, Dallas County, Texas
O.P.R.D.C.T. = Official Public Records, Dallas County, Texas
P.R.D.C.T. = Plat Records, Dallas County, Texas
IRS = 1/2" Iron Rod Set with red cap stamped "RPLS 4701"
IRF = 1/2" Iron Rod Found
PETITIT = 5/8" Iron Rod Found with yellow cap stamped "PETITIT"
CM = Controlling Monument



GENERAL NOTES

- The area (acres) shown hereon is based on the mathematical closure of the courses and distances reflected on this Survey. It does not include the tolerances that may be present due to positional accuracy of the boundary monuments in place.
- The coordinates shown hereon are of the Texas State Plane Coordinate System, North Central Zone (4202), North American Datum of 1983.

REFERENCE BEARING

The Bearings for the above prepared Survey and metes & bounds description are geodetic and are based upon GPS observations from City of Mesquite GPS Control Monuments No. 2, 3, 4 and 5. NAD-83 Surface Data, Texas North Central Zone 4202.

FLOOD ZONE NOTE:

This Surveyor has reviewed Flood Insurance Rate Map No. 48113C0380 L (Effective Date July 7, 2014) published by the Federal Emergency Management Administration for the Cities of Garland, Dallas and Mesquite, Texas and based upon said scaled map and graphic plotting, such review indicates that the Subject Tract lies in ZONE X (unshaded) and no part of the Subject Tract lies within the 100 Year Flood Plain.

CURVE TABLE

CURVE	DELTA ANGLE	RADIUS	ARC LENGTH	CHORD BEARING	CHORD LENGTH
C1	4°38'13"	3089.95'	250.08'	N 14°25'38" E	250.01'
C2	4°37'10"	3114.95'	251.14'	S 14°24'51" W	251.08'

LINE TABLE

LINE	BEARING	DISTANCE	LINE	BEARING	DISTANCE	LINE	BEARING	DISTANCE
L1	S 24°38'18" E	17.78'	L36	N 63°33'06" E	53.00'	L71	N 24°38'18" W	10.00'
L2	S 69°40'52" E	22.04'	L37	N 26°26'54" W	41.50'	L72	N 65°21'42" E	6.71'
L3	S 69°43'25" E	27.43'	L38	N 63°33'06" E	5.00'	L73	N 24°43'25" W	17.64'
L4	S 20°16'35" W	27.50'	L39	S 26°26'54" E	41.50'	L74	N 69°43'25" W	15.00'
L5	S 24°43'25" E	38.73'	L40	N 63°33'06" E	12.11'	L75	S 24°43'25" E	13.00'
L6	S 65°16'35" W	5.00'	L41	N 26°26'54" W	2.77'	L76	S 65°16'35" W	5.00'
L7	N 24°43'25" W	38.73'	L42	N 09°39'36" E	23.33'	L77	N 24°43'25" W	13.00'
L8	S 65°18'15" W	25.23'	L43	S 80°20'24" E	10.00'	L78	S 65°16'35" W	7.22'
L9	S 12°42'07" E	19.90'	L44	S 09°39'36" W	19.44'	L79	N 69°40'52" W	23.03'
L10	S 77°17'53" W	10.00'	L45	N 06°47'34" W	40.03'	L80	S 65°21'35" W	15.11'
L11	N 12°42'07" W	19.63'	L46	N 83°12'26" E	5.00'	L81	N 24°38'25" W	5.00'
L12	S 12°54'47" E	41.13'	L47	S 06°47'34" E	40.01'	L82	N 65°21'35" E	7.00'
L13	S 77°05'13" W	6.00'	L48	N 83°00'18" E	91.09'	L83	N 24°38'18" W	22.21'
L14	N 12°54'47" W	41.13'	L49	S 12°54'47" E	15.16'	L84	S 12°54'47" E	11.83'
L15	N 45°46'08" W	76.96'	L50	N 77°05'13" E	22.47'	L85	S 77°05'13" W	46.24'
L16	S 44°13'52" W	39.13'	L51	N 12°42'07" W	6.79'	L86	N 12°54'47" W	5.49'
L17	S 20°26'55" W	8.34'	L52	N 77°17'53" E	10.00'	L87	S 77°05'13" W	10.00'
L18	N 69°33'06" W	5.00'	L53	S 12°42'07" E	6.76'	L88	S 12°54'47" E	5.49'
L19	N 20°26'55" E	9.39'	L54	N 77°05'13" E	14.54'	L89	N 18°12'40" W	31.13'
L20	N 12°54'47" W	41.13'	L55	N 12°54'47" W	6.35'	L90	N 11°20'57" E	45.86'
L21	N 45°46'08" W	19.34'	L56	N 77°05'13" E	5.00'	L91	N 11°04'43" E	11.45'
L22	S 44°13'52" W	15.13'	L57	S 12°54'47" E	6.35'	L92	N 00°31'16" E	14.50'
L23	N 45°46'08" W	10.00'	L58	N 24°43'25" W	26.29'	L93	N 38°07'13" W	11.26'
L24	N 44°13'52" E	15.13'	L59	N 65°16'35" E	5.00'	L94	N 09°01'45" E	29.38'
L25	S 44°13'52" W	12.85'	L60	S 24°43'25" E	26.29'	L95	N 20°39'06" E	27.04'
L26	N 45°46'08" W	5.00'	L61	N 65°18'15" E	4.04'	L96	S 33°33'17" W	12.30'
L27	N 44°13'52" E	12.85'	L62	N 24°40'48" W	6.70'	L97	S 20°39'06" W	27.30'
L28	N 45°46'08" W	0.78'	L63	N 65°19'12" E	10.00'	L98	S 09°01'45" W	15.93'
L29	N 26°49'24" W	28.81'	L64	S 24°40'48" E	6.69'	L99	S 38°07'13" E	9.12'
L30	S 26°49'24" E	26.29'	L65	N 65°18'15" E	4.23'	L100	N 00°31'16" W	25.58'
L31	S 45°46'08" E	2.74'	L66	N 20°16'35" E	15.07'	L101	S 11°04'43" W	13.98'
L32	N 44°13'52" E	10.00'	L67	S 65°16'35" W	26.23'	L102	N 11°20'57" W	38.09'
L33	S 45°46'08" E	10.00'	L68	N 24°43'25" W	5.00'	L103	S 18°12'40" E	26.85'
L34	S 44°13'52" W	10.00'	L69	N 65°16'35" E	26.23'			
L35	N 44°13'52" E	26.82'	L70	S 65°21'42" W	6.73'			

OWNER:
130/NORTHWEST GMD, LTD.
4311 W. Lovers Lane #200
Dallas, Texas 75209-2803
214-520-8818
Contact: Louis H. Lebowitz

SURVEYOR
RINGLEY & ASSOCIATES, INC.
701 S. Tennessee Street
McKinney, Texas 75069
972-542-1266
Contact: Lawrence H. Ringley

RINGLEY & ASSOCIATES, INC.
SURVEYING - MAPPING - PLANNING
COMPUTER AIDED DRAFTING & DESIGN
701 S. Tennessee - McKinney, Texas 75069

Drawn by	Date	Scale	Job No.	Title	Sheet
Mark Hood	10/13/16	1" = 60'	16009	16009-PP.DWG	1 of 2

PRELIMINARY
RELEASED 10/13/16 FOR REVIEW PURPOSES ONLY. THIS DOCUMENT SHALL NOT BE RECORDED FOR ANY PURPOSE.

PRELIMINARY PLAT
PALLADIUM GARLAND ADDITION
LOTS 1-3, BLOCK 1
situated in the
S.A. & M.G. R.R. Co. Survey - Abst. 1410
Josiah Phelps Survey - Abst. 1157
Theophilus Thomas Survey - Abst. 1461
Cities of Garland, Dallas & Mesquite
Dallas County, Texas
City Plan File Number: S167-005